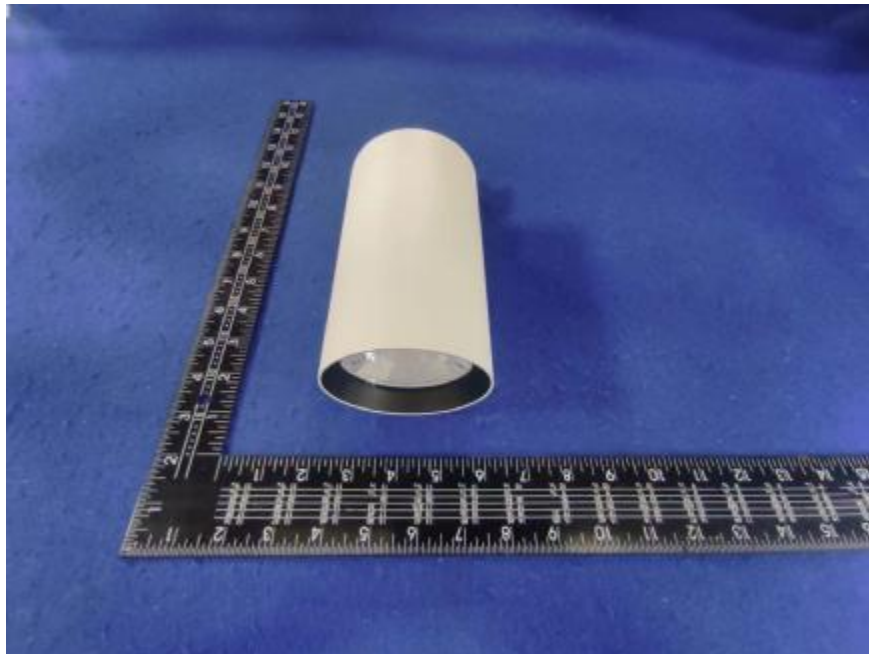


### Luminaire Photograph



Light Output Ratio:	92.9%	
Luminaire Power:	36.41 W	
SHR Nominal:	0.50	Calculated using the TM5
SHR Maximum:	0.65	fine grid method.

C Range: 0 - 360DEG  
C Interval: 30.0DEG  
Test Speed: HIGH  
Temperature: 25.3 °C  
Operators: zoe  
Test Date: 2024-3-28

Range: 0 - 180DEG  
Interval: 1.0DEG  
Test System: EVERFINE GO-SPEX500\_V1 SYSTEM V2.00.461  
Humidity: 65.0%  
Test Distance: 3.160m [K=1.0000]  
Remarks: LAMP: BXRE-30G2000-C-83 Ra:90  
LENS: PM-0139B 36R  
DRIVER: TDI044NA0900EF 900mA  
30minutes warm-up

## LUMINOUS INTENSITY DISTRIBUTION DIAGRAM

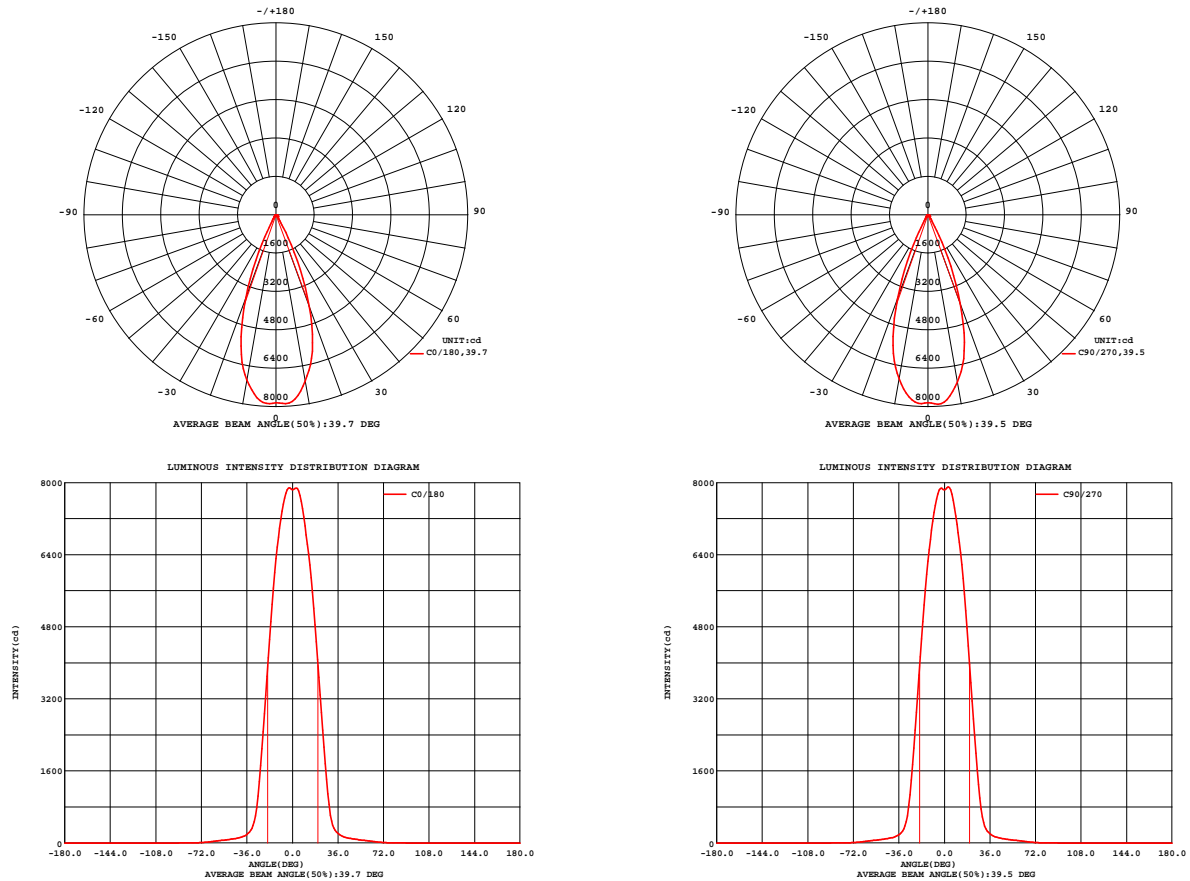


Fig. C0/C180

Fig. C90/C270

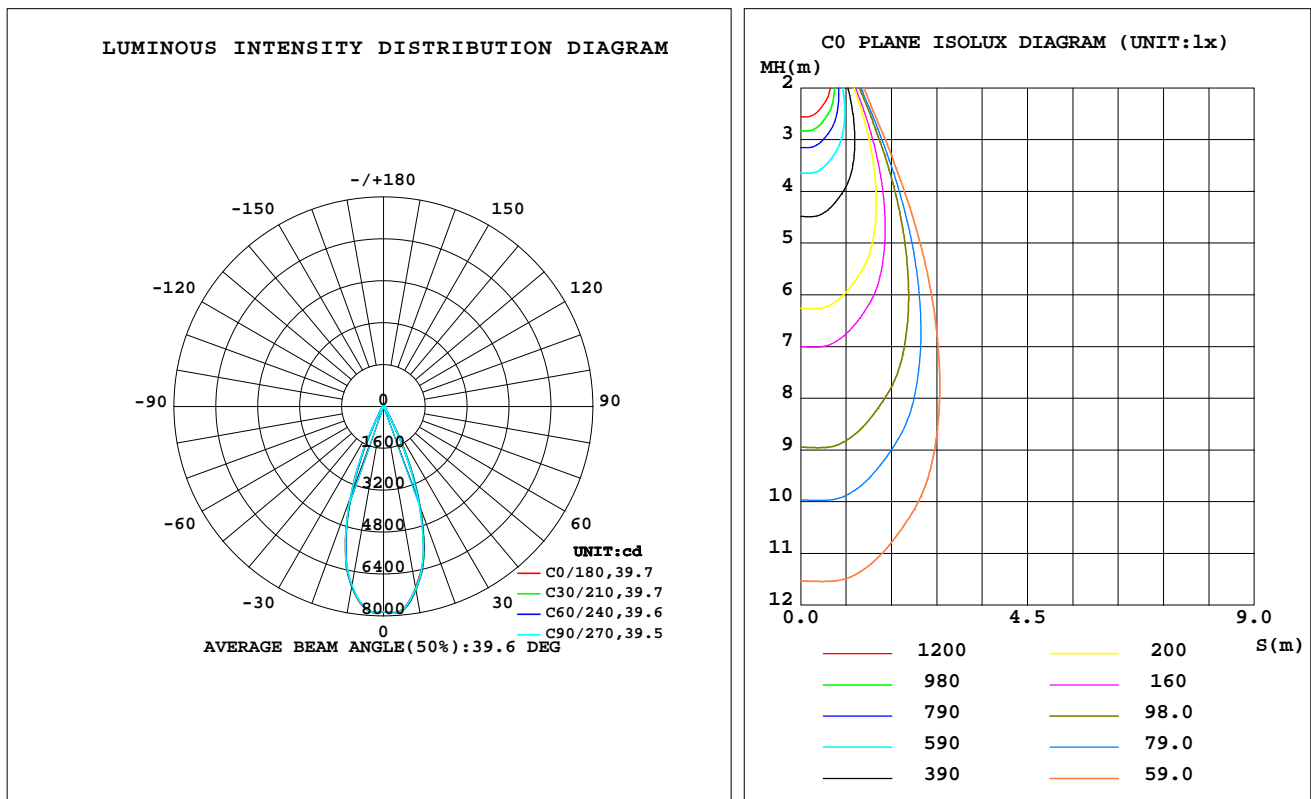
C Range: 0 - 360DEG  
C Interval: 30.0DEG  
Test Speed: HIGH  
Temperature: 25.3 °C  
Operators: zoe  
Test Date: 2024-3-28

Range: 0 - 180DEG  
Interval: 1.0DEG  
Test System: EVERFINE GO-SPEX500\_V1 SYSTEM V2.00.461  
Humidity: 65.0%  
Test Distance: 3.160m [K=1.0000]  
Remarks: LAMP: BXRE-30G2000-C-83 Ra: 90  
LENS: PM-0139B 36R  
DRIVER: TDI044NA0900EF 900mA  
30minutes warm-up

## LUMINAIRE PHOTOMETRIC TEST REPORT

Test:U:120.10V I:0.3050A P:36.413W PF:0.9929 Freq:59.98Hz Lamp Flux:3734.05x1 lm		
NAME: 2319.221-H3AM	TYPE:	WEIGHT:
SPEC.: 3000K	DIM.:	SERIAL No.: 2403280237
MFR.: RISE	SUR.: 0.00580586m2	Shielding Angle:

DATA OF LAMP		PHOTOMETRIC DATA Eff: 95.28 lm/W			
MODEL	Brideglux	I <sub>max</sub> (cd)	7905	S/MH(C0/180)	0.60
NOMINAL POWER(W)	36	LOR(%)	92.9	S/MH(C90/270)	0.60
RATED VOLTAGE(V)	120	TOTAL FLUX(lm)	3469.6	UP,DN(C0-180)	0.0,47.7
NOMINAL FLUX(lm)	3734.05	CIE CLASS	DIRECT	UP,DN(C180-360)	0.0,45.2
LAMPS INSIDE	1	up(%)	0.0	CIBSE SHR NOM	0.50
TEST VOLTAGE(V)	120	down(%)	92.9	CIBSE SHR MAX	0.65



C Range: 0 - 360DEG  
C Interval: 30.0DEG  
Test Speed: HIGH  
Temperature:25.3℃  
Operators:zoe  
Test Date:2024-3-28

Range: 0 - 180DEG  
Interval: 1.0DEG  
Test System:EVERFINE GO-SPEX500\_V1 SYSTEM V2.00.461  
Humidity:65.0%  
Test Distance:3.160m [K=1.0000]  
Remarks: LAMP:BXRE-30G2000-C-83 Ra:90  
LENS:PM-0139B 36R  
DRIVER:TDI044NA0900EF 900mA  
30minutes warm-up

## ZONAL FLUX DIAGRAM

### ZONAL FLUX DIAGRAM:

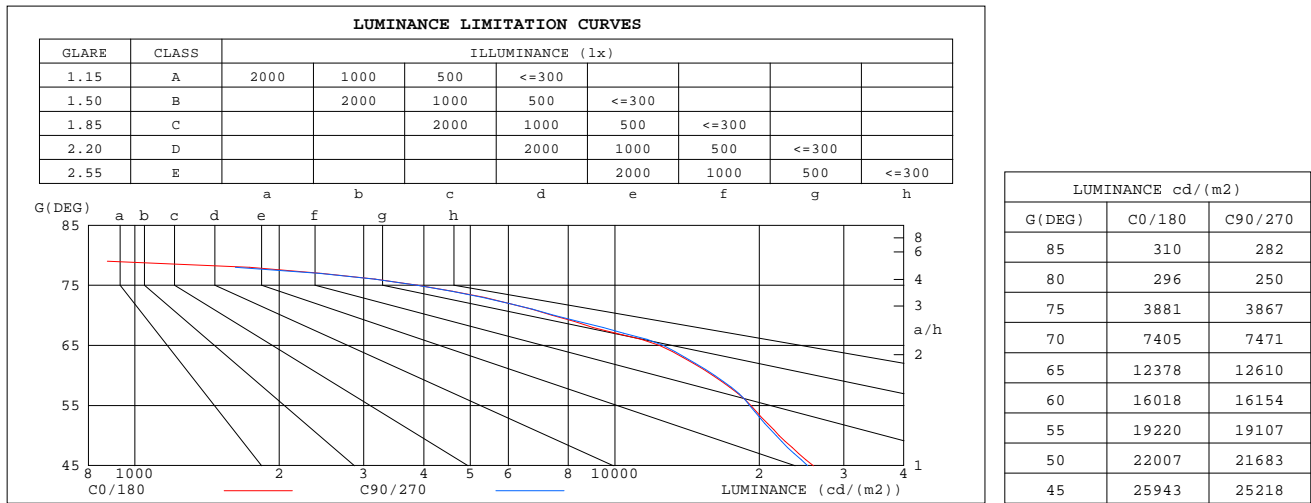
	C0	C45	C90	C135	C180	C225	C270	C315		zone	total	%lum,lamp
10	7041	7109	7076	7073	6988	6980	6944	6993	0- 10	718.3	718.3	20.7,19.2
20	4077	4094	3964	3850	3695	3641	3724	3908	10- 20	1555	2273	65.5,60.9
30	616.6	630.4	581.7	511.6	472.4	457.4	472.1	525.1	20- 30	870.0	3143	90.6,84.2
40	145.5	146.7	141.8	135.6	131.9	129.1	127.8	132.4	30- 40	156.8	3300	95.1,88.4
50	82.05	82.35	80.94	79.17	77.85	76.90	76.87	78.78	40- 50	79.33	3379	97.4,90.5
60	46.45	47.29	46.91	45.70	43.99	43.47	43.86	44.94	50- 60	55.45	3435	99,92
70	14.69	15.07	14.84	14.18	13.20	12.93	13.22	13.91	60- 70	28.72	3463	99.8,92.7
80	0.2985	0.2672	0.2524	0.2164	0.1982	0.1628	0.1818	0.1830	70- 80	6.196	3470	100,92.9
90	0	0	0	0	0	0	0	0	80- 90	0.1347	3470	100,92.9
100	0	0	0	0	0	0	0	0	90-100	0	3470	100,92.9
110	0	0	0	0	0	0	0	0	100-110	0	3470	100,92.9
120	0	0	0	0	0	0	0	0	110-120	0	3470	100,92.9
130	0	0	0	0	0	0	0	0	120-130	0	3470	100,92.9
140	0	0	0	0	0	0	0	0	130-140	0	3470	100,92.9
150	0	0	0	0	0	0	0	0	140-150	0	3470	100,92.9
160	0	0	0	0	0	0	0	0	150-160	0	3470	100,92.9
170	0	0	0	0	0	0	0	0	160-170	0	3470	100,92.9
180	0	0	0	0	0	0	0	0	170-180	0	3470	100,92.9
DEG	LUMINOUS INTENSITY:cd									UNIT:lm		

C Range: 0 - 360DEG  
C Interval: 30.0DEG  
Test Speed: HIGH  
Temperature:25.3℃  
Operators:zoe  
Test Date:2024-3-28

Range: 0 - 180DEG  
Interval: 1.0DEG  
Test System:EVERFINE GO-SPEX500\_V1 SYSTEM V2.00.461  
Humidity:65.0%  
Test Distance:3.160m [K=1.0000]  
Remarks: LAMP:BXRE-30G2000-C-83 Ra:90  
LENS:PM-0139B 36R  
DRIVER:TDI044NA0900EF 900mA  
30minutes warm-up

### LUMINANCE LIMITATION CURVES

Test:U:120.10V I:0.3050A P:36.413W PF:0.9929 Freq:59.98Hz Lamp Flux:3734.05x1 lm		
NAME: 2319.221-H3AM	TYPE:	WEIGHT:
SPEC.: 3000K	DIM.:	SERIAL No.: 2403280237
MFR.: RISE	SUR.: 0.00580586m2	Shielding Angle:



C Range: 0 - 360DEG  
C Interval: 30.0DEG  
Test Speed: HIGH  
Temperature:25.3℃  
Operators:zoe  
Test Date:2024-3-28

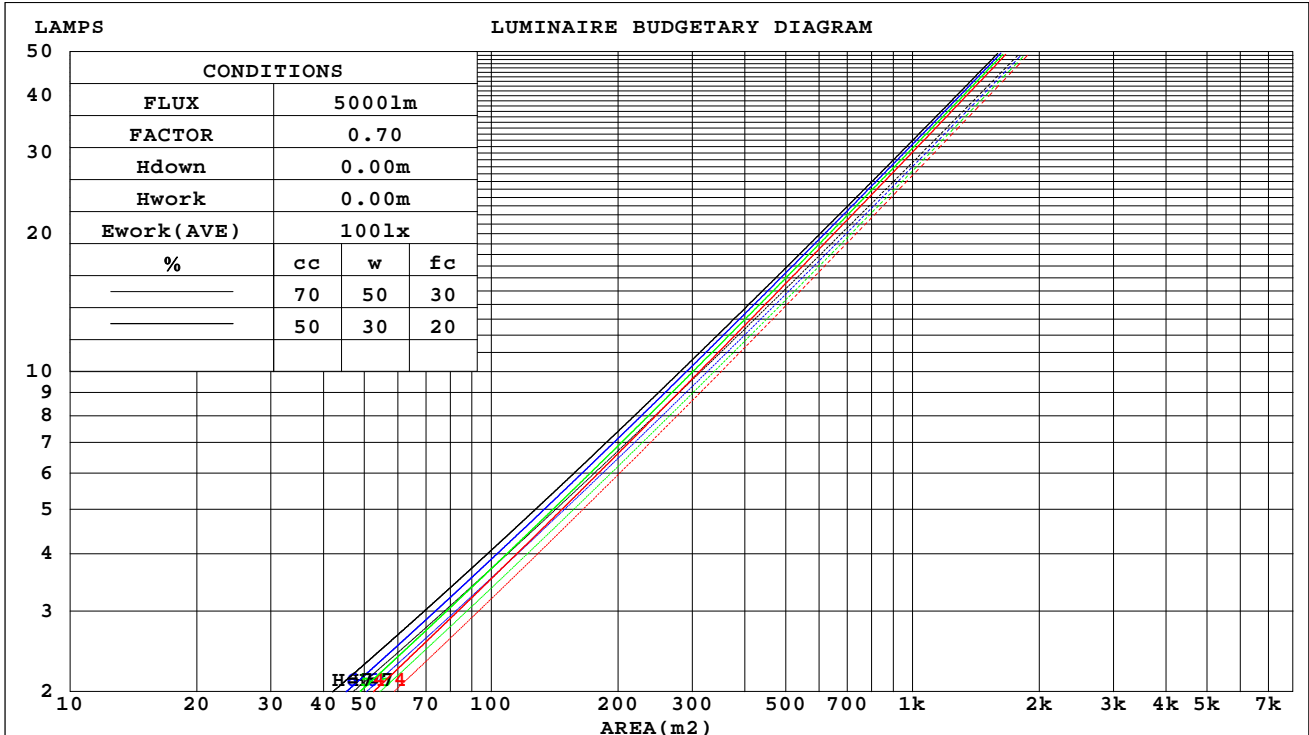
Range: 0 - 180DEG  
Interval: 1.0DEG  
Test System:EVERFINE GO-SPEX500\_V1 SYSTEM V2.00.461  
Humidity:65.0%  
Test Distance:3.160m [K=1.0000]  
Remarks: LAMP:BXRE-30G2000-C-83 Ra:90  
LENS:PM-0139B 36R  
DRIVER:TDI044NA0900EF 900mA  
30minutes warm-up

## CU AND LUMINAIRE BUDGETARY ESTIMATE DIAGRAM

Test:U:120.10V I:0.3050A P:36.413W PF:0.9929 Freq:59.98Hz  
Lamp Flux:3734.05x1 lm

NAME: 2319.221-H3AM	TYPE:	WEIGHT:
SPEC.: 3000K	DIM.:	SERIAL No.: 2403280237
MFR.: RISE	SUR.: 0.00580586m2	Shielding Angle:

cc	80%			70%			50%			30%			10%			0
w	50%	30%	10%	50%	30%	10%	50%	30%	10%	50%	30%	10%	50%	30%	10%	0
fc	20%			20%			20%			20%			20%			0
RCR	RCR:Room Cavity Ratio															



C Range: 0 - 360DEG  
C Interval: 30.0DEG  
Test Speed: HIGH  
Temperature:25.3℃  
Operators:zoe  
Test Date:2024-3-28

Range: 0 - 180DEG  
Interval: 1.0DEG  
Test System:EVERFINE GO-SPEX500\_V1 SYSTEM V2.00.461  
Humidity:65.0%  
Test Distance:3.160m [K=1.0000]  
Remarks: LAMP:BXRE-30G2000-C-83 Ra:90  
LENS:PM-0139B 36R  
DRIVER:TDI044NA0900EF 900mA  
30minutes warm-up

### WEC AND CCEC

Test:U:120.10V I:0.3050A P:36.413W PF:0.9929 Freq:59.98Hz Lamp Flux:3734.05x1 lm		
NAME: 2319.221-H3AM	TYPE:	WEIGHT:
SPEC.: 3000K	DIM.:	SERIAL No.: 2403280237
MFR.: RISE	SUR.: 0.00580586m2	Shielding Angle:

cc	80%			70%			50%			30%			10%			0	
w	50%	30%	10%	50%	30%	10%	50%	30%	10%	50%	30%	10%	50%	30%	10%	0	
fc	20%			20%			20%			20%			20%			0	
RCR	RCR:Room Cavity Ratio						Wall Exitance Coefficients(WEC)										
0.0																	
1.0	.145	.082	.026	.138	.079	.025	.127	.073	.023	.116	.067	.021	.106	.062	.020		
2.0	.136	.075	.023	.131	.072	.022	.121	.067	.021	.112	.063	.020	.104	.059	.019		
3.0	.128	.068	.020	.124	.066	.020	.116	.063	.019	.108	.059	.018	.101	.056	.017		
4.0	.121	.063	.018	.117	.061	.018	.110	.058	.017	.104	.056	.017	.098	.053	.016		
5.0	.114	.058	.017	.111	.057	.017	.105	.055	.016	.100	.053	.016	.094	.050	.015		
6.0	.109	.054	.016	.106	.053	.015	.101	.052	.015	.096	.050	.015	.091	.048	.014		
7.0	.103	.051	.014	.101	.050	.014	.096	.049	.014	.092	.047	.014	.088	.046	.013		
8.0	.099	.048	.014	.097	.048	.013	.093	.046	.013	.089	.045	.013	.085	.044	.013		
9.0	.094	.046	.013	.093	.045	.013	.089	.044	.012	.086	.043	.012	.082	.042	.012		
10.0	.091	.043	.012	.089	.043	.012	.086	.042	.012	.083	.041	.012	.080	.040	.012		

cc	80%			70%			50%			30%			10%			0
w	50%	30%	10%	50%	30%	10%	50%	30%	10%	50%	30%	10%	50%	30%	10%	0
fc	20%			20%			20%			20%			20%			0
RCR	RCR:Room Cavity Ratio			Ceiling Cavity Exitance Coefficients(CCEC)												
0.0	.177	.177	.177	.151	.151	.151	.103	.103	.103	.059	.059	.059	.019	.019	.019	
1.0	.158	.146	.136	.135	.126	.117	.092	.086	.081	.053	.050	.047	.017	.016	.015	
2.0	.142	.123	.107	.122	.106	.093	.083	.073	.065	.048	.043	.038	.015	.014	.012	
3.0	.129	.105	.086	.111	.091	.075	.076	.063	.053	.044	.037	.031	.014	.012	.010	
4.0	.118	.091	.071	.102	.079	.061	.070	.055	.043	.040	.032	.026	.013	.010	.008	
5.0	.109	.080	.059	.094	.069	.051	.065	.048	.036	.037	.028	.021	.012	.009	.007	
6.0	.102	.071	.049	.087	.062	.043	.060	.043	.030	.035	.025	.018	.011	.008	.006	
7.0	.095	.064	.042	.082	.055	.037	.057	.039	.026	.033	.023	.015	.011	.007	.005	
8.0	.089	.058	.036	.077	.050	.031	.053	.035	.022	.031	.021	.013	.010	.007	.004	
9.0	.084	.053	.031	.073	.046	.027	.050	.032	.019	.029	.019	.012	.010	.006	.004	
10.0	.080	.048	.027	.069	.042	.024	.048	.030	.017	.028	.018	.010	.009	.006	.003	

C Range: 0 - 360DEG  
C Interval: 30.0DEG  
Test Speed: HIGH  
Temperature:25.3℃  
Operators:zoe  
Test Date:2024-3-28

Range: 0 - 180DEG  
Interval: 1.0DEG  
Test System:EVERFINE GO-SPEX500\_V1 SYSTEM V2.00.461  
Humidity:65.0%  
Test Distance:3.160m [K=1.0000]  
Remarks: LAMP:BXRE-30G2000-C-83 Ra:90  
LENS:PM-0139B 36R  
DRIVER:TDI044NA0900EF 900mA  
30minutes warm-up

## UGR(Unified Glare Rating) Table

Test:U:120.10V I:0.3050A P:36.413W PF:0.9929 Freq:59.98Hz Lamp Flux:3734.05x1 lm										
NAME: 2319.221-H3AM					TYPE:			WEIGHT:		
SPEC.: 3000K					DIM.:			SERIAL No.: 2403280237		
MFR.: RISE					SUR.: 0.00580586m2			Shielding Angle:		
ceiling/cavity	0.7	0.7	0.5	0.5	0.3	0.7	0.7	0.5	0.5	0.3
walls	0.5	0.3	0.5	0.3	0.3	0.5	0.3	0.5	0.3	0.3
working plane	0.2	0.2	0.2	0.2	0.2	0.2	0.2	0.2	0.2	0.2
Room dimensions	Viewed crosswise					Viewed endwise				
x = 2H y = 2H	11.7	12.5	11.9	12.6	12.8	11.6	12.3	11.8	12.5	12.7
3H	12.0	12.7	12.3	12.9	13.1	11.9	12.6	12.2	12.8	13.0
4H	12.0	12.7	12.3	12.9	13.1	11.9	12.6	12.2	12.8	13.0
6H	11.9	12.6	12.2	12.8	13.0	11.8	12.5	12.1	12.7	12.9
8H	11.9	12.5	12.2	12.7	13.0	11.8	12.4	12.1	12.7	12.9
12H	11.8	12.4	12.1	12.7	13.0	11.7	12.3	12.0	12.6	12.9
4H 2H	11.9	12.6	12.2	12.8	13.0	11.8	12.5	12.1	12.7	12.9
3H	12.3	12.9	12.6	13.1	13.4	12.2	12.8	12.5	13.0	13.3
4H	12.3	12.8	12.6	13.1	13.4	12.2	12.7	12.5	13.0	13.3
6H	12.2	12.7	12.5	13.0	13.3	12.1	12.6	12.5	12.9	13.2
8H	12.1	12.6	12.5	12.9	13.3	12.0	12.5	12.4	12.8	13.2
12H	12.1	12.5	12.5	12.8	13.2	12.0	12.4	12.4	12.8	13.2
8H 4H	12.2	12.6	12.5	13.0	13.3	12.1	12.5	12.5	12.9	13.2
6H	12.1	12.4	12.5	12.8	13.2	12.0	12.4	12.4	12.7	13.2
8H	12.0	12.3	12.5	12.8	13.2	11.9	12.3	12.4	12.7	13.1
12H	11.9	12.2	12.4	12.7	13.1	11.9	12.2	12.3	12.6	13.1
12H 4H	12.1	12.5	12.5	12.9	13.3	12.0	12.4	12.4	12.8	13.2
6H	12.0	12.3	12.5	12.8	13.2	11.9	12.3	12.4	12.7	13.1
8H	11.9	12.2	12.4	12.7	13.1	11.9	12.2	12.3	12.6	13.1
Variations with the observer position at spacings(CIE Pub.117):										
S = 1.0H	+ 0.8 / - 1.2					+ 0.8 / - 1.2				
1.5H	+ 1.1 / - 0.7					+ 1.0 / - 0.6				
2.0H	+ 1.1 / - 1.2					+ 1.0 / - 1.2				

CIE Pub.117, 3734 lm Total Lamp Luminous Flux Correct (8log(F/F0) = 4.6)  
Area: 0.00580586 m2

C Range: 0 - 360DEG  
C Interval: 30.0DEG  
Test Speed: HIGH  
Temperature:25.3℃  
Operators:zoe  
Test Date:2024-3-28

Range: 0 - 180DEG  
Interval: 1.0DEG  
Test System:EVERFINE GO-SPEX500\_V1 SYSTEM V2.00.461  
Humidity:65.0%  
Test Distance:3.160m [K=1.0000]  
Remarks: LAMP:BXRE-30G2000-C-83 Ra:90  
LENS:PM-0139B 36R  
DRIVER:TDI044NA0900EF 900mA  
30minutes warm-up



### UTILIZATION FACTORS TABLE

Test:U:120.10V I:0.3050A P:36.413W PF:0.9929 Freq:59.98Hz Lamp Flux:3734.05x1 lm		
NAME: 2319.221-H3AM	TYPE:	WEIGHT:
SPEC.: 3000K	DIM.:	SERIAL No.: 2403280237
MFR.: RISE	SUR.: 0.00580586m2	Shielding Angle:

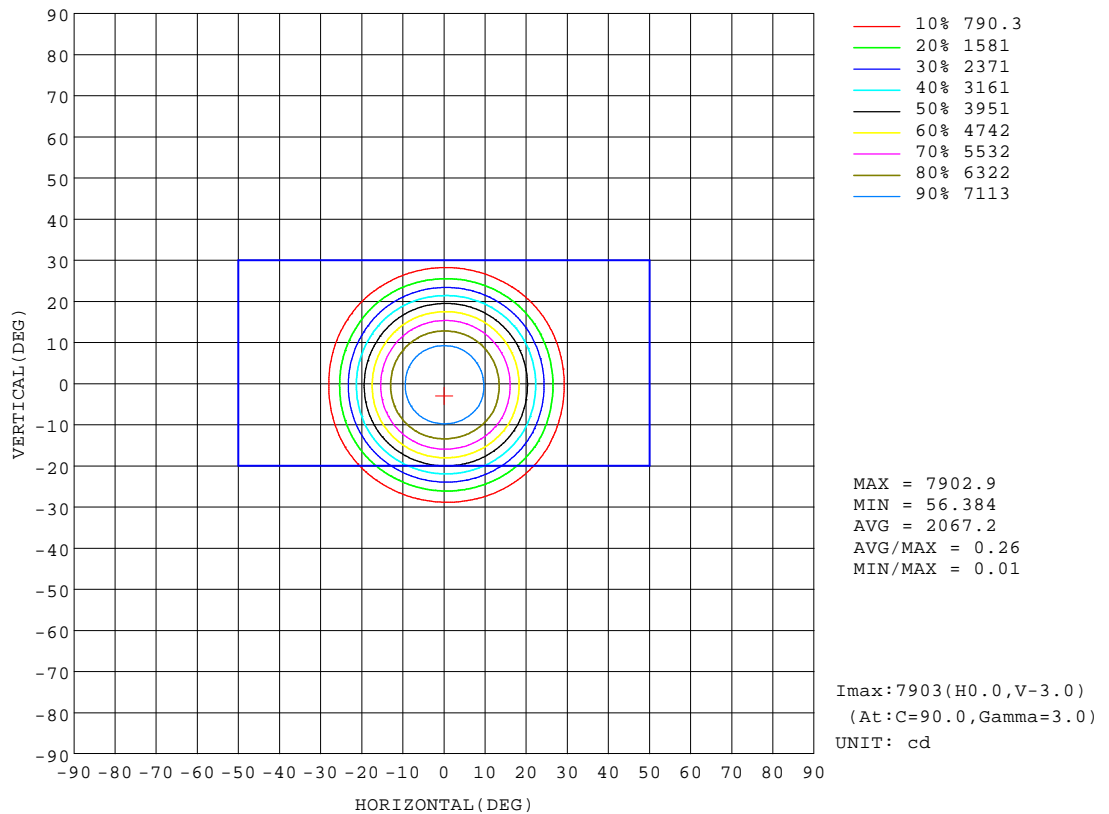
REFLECTANCE										
Ceiling	0.8	0.8	0.8	0.7	0.7	0.7	0.5	0.5	0.5	0
Walls	0.7	0.5	0.3	0.7	0.5	0.3	0.7	0.5	0.3	0
Working plane	0.2	0.2	0.2	0.2	0.2	0.2	0.2	0.2	0.2	0
ROOM INDEX	UTILIZATION FACTORS(PERCENT) $k(RI) \times RCR = 5$									
k = 0.60	82	76	73	82	76	73	81	76	73	70
0.80	89	84	80	88	83	80	87	83	80	77
1.00	93	88	85	92	87	84	91	87	84	80
1.25	96	92	89	95	91	88	94	90	88	84
1.50	99	95	92	98	94	91	96	93	90	86
2.00	101	97	95	100	96	94	97	95	92	88
2.50	103	99	97	101	98	96	98	96	94	89
3.00	104	101	99	102	100	98	99	97	96	90
4.00	106	103	102	104	102	100	101	99	98	91
5.00	107	105	103	105	103	102	101	100	99	92
ROOM INDEX	UF(total)									Direct
According to DIN EN 13032-2 2004			Suspended					SHRNOM = 1.25		

C Range: 0 - 360DEG  
C Interval: 30.0DEG  
Test Speed: HIGH  
Temperature:25.3℃  
Operators:zoe  
Test Date:2024-3-28

Range: 0 - 180DEG  
Interval: 1.0DEG  
Test System:EVERFINE GO-SPEX500\_V1 SYSTEM V2.00.461  
Humidity:65.0%  
Test Distance:3.160m [K=1.0000]  
Remarks: LAMP:BXRE-30G2000-C-83 Ra:90  
LENS:PM-0139B 36R  
DRIVER:TDI044NA0900EF 900mA  
30minutes warm-up

## ISOCANDELA DIAGRAM

Test:U:120.10V I:0.3050A P:36.413W PF:0.9929 Freq:59.98Hz Lamp Flux:3734.05x1 lm		
NAME: 2319.221-H3AM	TYPE:	WEIGHT:
SPEC.: 3000K	DIM.:	SERIAL No.: 2403280237
MFR.: RISE	SUR.: 0.00580586m2	Shielding Angle:

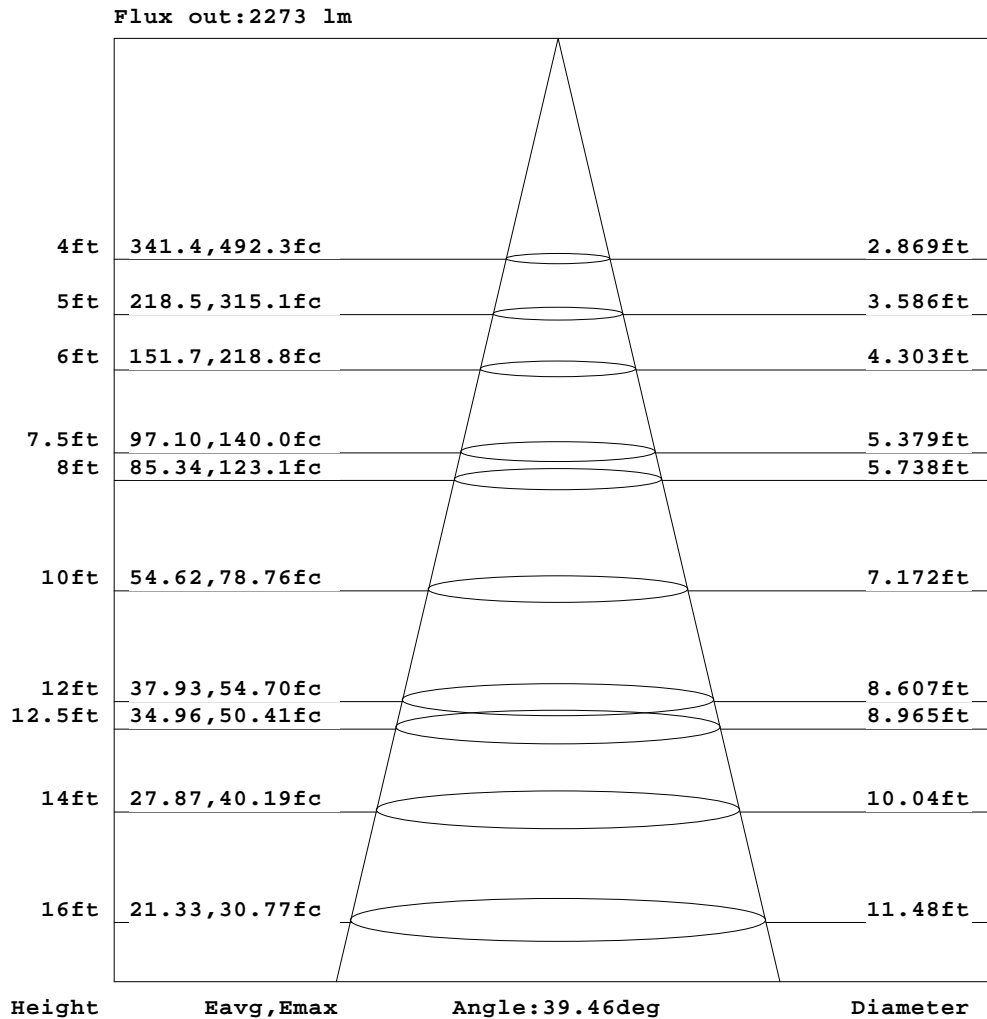


C Range: 0 - 360DEG  
C Interval: 30.0DEG  
Test Speed: HIGH  
Temperature:25.3℃  
Operators:zoe  
Test Date:2024-3-28

Range: 0 - 180DEG  
Interval: 1.0DEG  
Test System:EVERFINE GO-SPEX500\_V1 SYSTEM V2.00.461  
Humidity:65.0%  
Test Distance:3.160m [K=1.0000]  
Remarks: LAMP:BXRE-30G2000-C-83 Ra:90  
LENS:PM-0139B 36R  
DRIVER:TDI044NA0900EF 900mA  
30minutes warm-up

## AAI Figure

Test:U:120.10V I:0.3050A P:36.413W PF:0.9929 Freq:59.98Hz Lamp Flux:3734.05x1 lm		
NAME: 2319.221-H3AM	TYPE:	WEIGHT:
SPEC.: 3000K	DIM.:	SERIAL No.: 2403280237
MFR.: RISE	SUR.: 0.00580586m2	Shielding Angle:



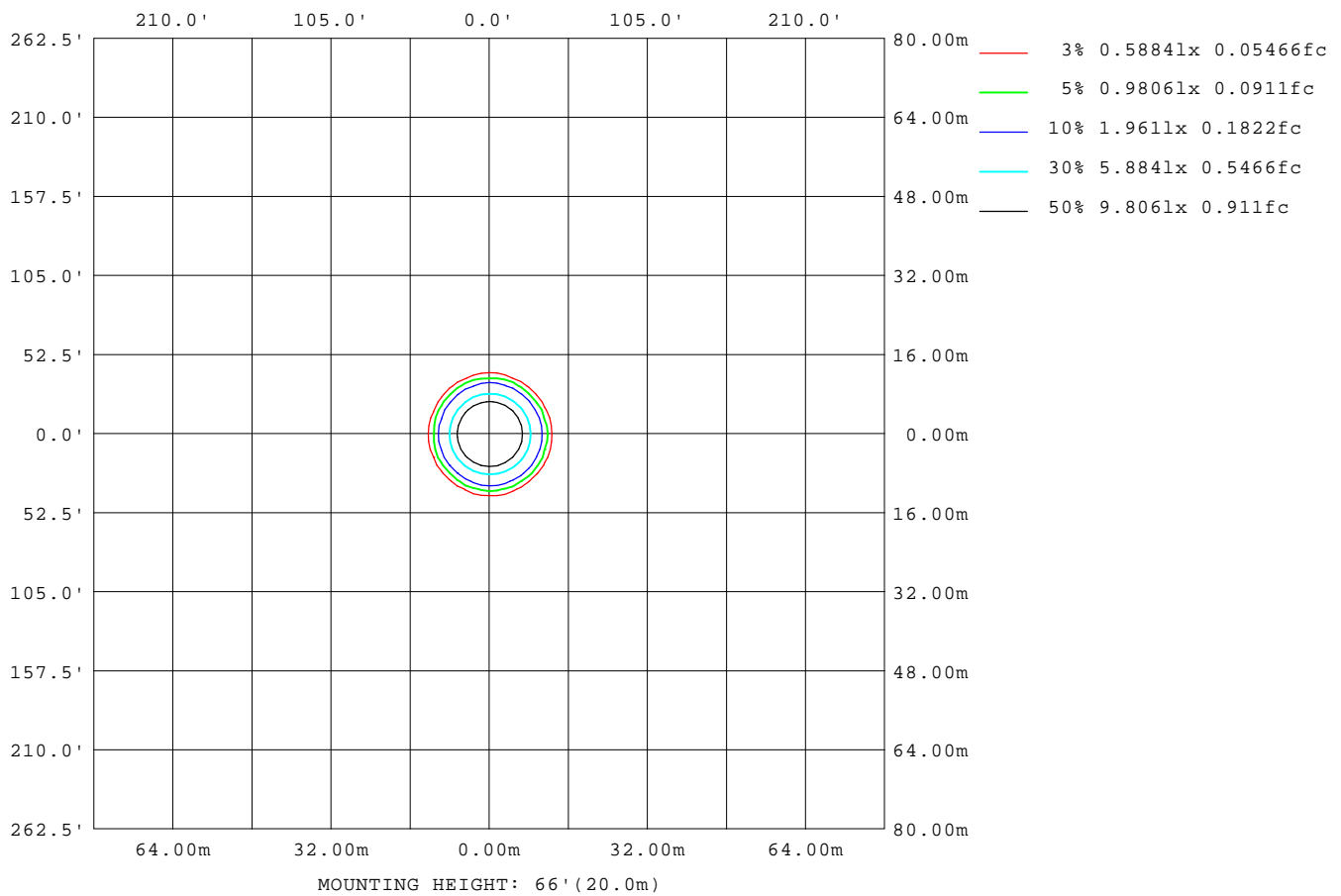
Note: The Curves indicate the illuminated area and the average illumination when the luminaire is at different distance.

C Range: 0 - 360DEG  
C Interval: 30.0DEG  
Test Speed: HIGH  
Temperature: 25.3 °C  
Operators: zoe  
Test Date: 2024-3-28

Range: 0 - 180DEG  
Interval: 1.0DEG  
Test System: EVERFINE GO-SPEX500\_V1 SYSTEM V2.00.461  
Humidity: 65.0%  
Test Distance: 3.160m [K=1.0000]  
Remarks: LAMP: BXRE-30G2000-C-83 Ra: 90  
LENS: PM-0139B 36R  
DRIVER: TDI044NA0900EF 900mA  
30minutes warm-up

## ISOLUX DIAGRAM

Test:U:120.10V I:0.3050A P:36.413W PF:0.9929 Freq:59.98Hz Lamp Flux:3734.05x1 lm		
NAME: 2319.221-H3AM	TYPE:	WEIGHT:
SPEC.: 3000K	DIM.:	SERIAL No.: 2403280237
MFR.: RISE	SUR.: 0.00580586m2	Shielding Angle:



C Range: 0 - 360DEG  
C Interval: 30.0DEG  
Test Speed: HIGH  
Temperature:25.3℃  
Operators:zoe  
Test Date:2024-3-28

Range: 0 - 180DEG  
Interval: 1.0DEG  
Test System:EVERFINE GO-SPEX500\_V1 SYSTEM V2.00.461  
Humidity:65.0%  
Test Distance:3.160m [K=1.0000]  
Remarks: LAMP:BXRE-30G2000-C-83 Ra:90  
LENS:PM-0139B 36R  
DRIVER:TDI044NA0900EF 900mA  
30minutes warm-up

## LED Avg.L Report

Test:U:120.10V I:0.3050A P:36.413W PF:0.9929 Freq:59.98Hz Lamp Flux:3734.05x1 lm		
NAME: 2319.221-H3AM	TYPE:	WEIGHT:
SPEC.: 3000K	DIM.:	SERIAL No.: 2403280237
MFR.: RISE	SUR.: 0.00580586m2	Shielding Angle:

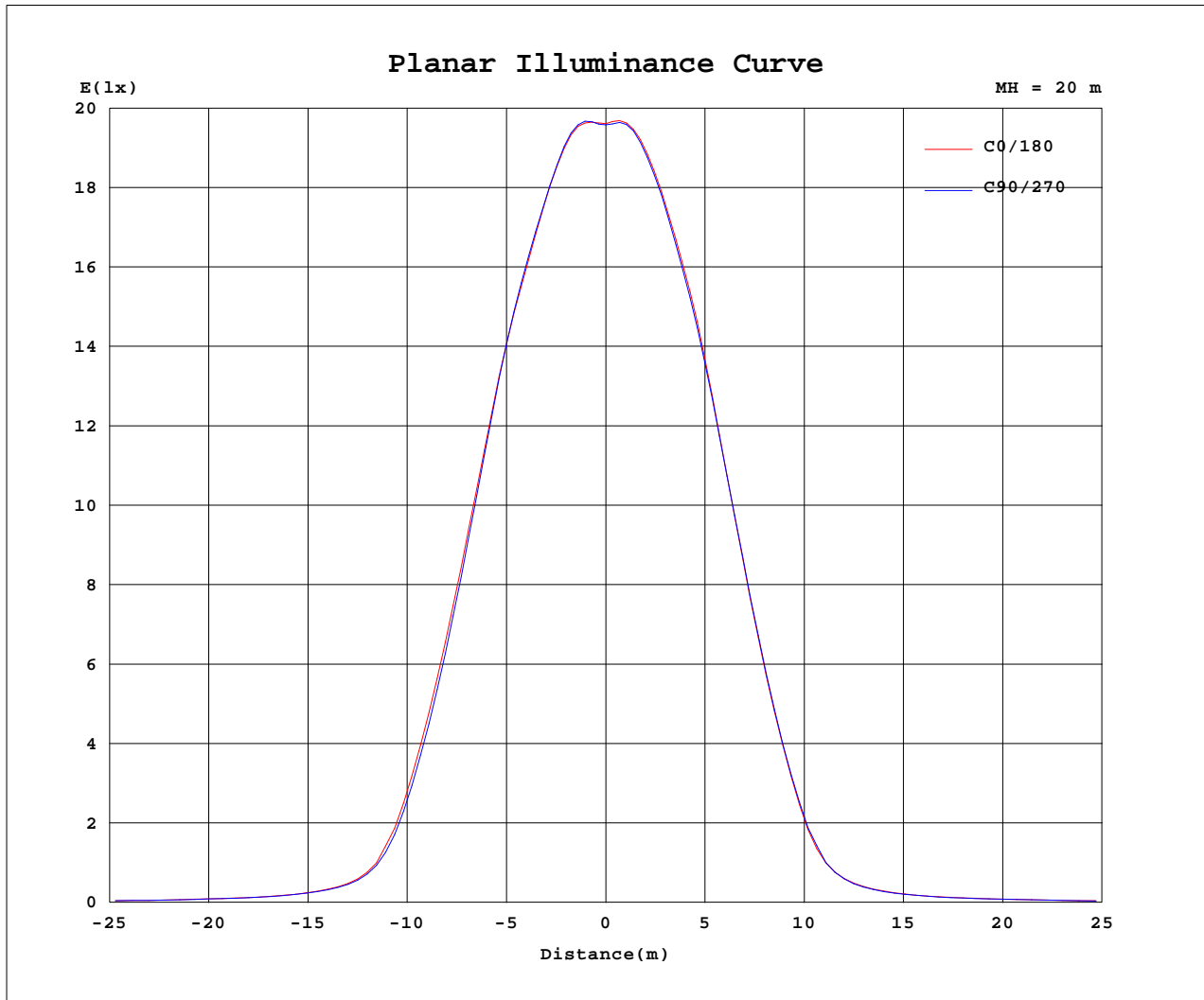
AvgL	cd/m2
L_0~180(65)av	11932
L_0~180(75)av	3546
L_0~180(85)av	295
L_90~270(65)av	12072
L_90~270(75)av	3534
L_90~270(85)av	265
L_45(65)av	12024
L_45(75)av	3577
L_45(85)av	212

Standard: GB/T 29293-2012

C Range: 0 - 360DEG  
C Interval: 30.0DEG  
Test Speed: HIGH  
Temperature:25.3℃  
Operators:zoe  
Test Date:2024-3-28

Range: 0 - 180DEG  
Interval: 1.0DEG  
Test System:EVERFINE GO-SPEX500\_V1 SYSTEM V2.00.461  
Humidity:65.0%  
Test Distance:3.160m [K=1.0000]  
Remarks: LAMP:BXRE-30G2000-C-83 Ra:90  
LENS:PM-0139B 36R  
DRIVER:TDI044NA0900EF 900mA  
30minutes warm-up

## Planar Illuminance Curve



C Range: 0 - 360DEG  
 C Interval: 30.0DEG  
 Test Speed: HIGH  
 Temperature: 25.3 °C  
 Operators: zoe  
 Test Date: 2024-3-28

Range: 0 - 180DEG  
 Interval: 1.0DEG  
 Test System: EVERFINE GO-SPEX500\_V1 SYSTEM V2.00.461  
 Humidity: 65.0%  
 Test Distance: 3.160m [K=1.0000]  
 Remarks: LAMP: BXRE-30G2000-C-83 Ra:90  
 LENS: PM-0139B 36R  
 DRIVER: TDI044NA0900EF 900mA  
 30minutes warm-up



## LUMINOUS DISTRIBUTION INTENSITY DATA

Test:U:120.10V I:0.3050A P:36.413W PF:0.9929 Freq:59.98Hz Lamp Flux:3734.05x1 lm		
NAME: 2319.221-H3AM	TYPE:	WEIGHT:
SPEC.: 3000K	DIM.:	SERIAL No.: 2403280237
MFR.: RISE	SUR.: 0.00580586m2	Shielding Angle:

Table--1

UNIT: cd

C(DEG) (DEG)	0	30	60	90	120	150	180	210	240	270	300	330						
0	7837	7837	7837	7837	7837	7837	7837	7837	7837	7837	7837	7837						
5	7815	7857	7848	7843	7825	7807	7764	7744	7752	7745	7762	7791						
10	7041	7120	7099	7076	7087	7059	6988	6988	6971	6944	6984	7002						
15	5885	5983	5916	5870	5843	5776	5661	5603	5610	5638	5727	5800						
20	4077	4132	4055	3964	3885	3815	3695	3614	3667	3724	3844	3972						
25	2128	2178	2077	1996	1863	1812	1713	1621	1683	1738	1851	1992						
30	617	658	603	582	519	504	472	452	463	472	497	553						
35	245	252	243	236	218	222	215	205	208	204	209	224						
40	145	149	145	142	134	137	132	129	129	128	128	137						
45	106	107	105	104	99.9	102	99.2	97.7	97.3	97.2	97.5	103						
50	82.0	82.9	81.8	80.9	78.9	79.4	77.9	76.9	76.9	76.9	77.5	80.1						
55	63.9	64.7	64.3	63.6	62.2	62.3	60.8	60.0	60.4	60.4	60.9	62.8						
60	46.5	47.4	47.2	46.9	45.9	45.5	44.0	43.2	43.8	43.9	44.4	45.5						
65	30.3	31.1	31.1	30.9	30.2	29.6	28.2	27.5	28.2	28.3	28.8	29.6						
70	14.7	15.1	15.0	14.8	14.4	14.0	13.2	12.8	13.1	13.2	13.7	14.1						
75	5.83	6.06	6.01	5.81	5.65	5.35	4.83	4.51	4.75	4.81	5.16	5.45						
80	0.30	0.28	0.25	0.25	0.23	0.21	0.20	0.16	0.16	0.18	0.17	0.20						
85	0.16	0.12	0.12	0.14	0.13	0.12	0.14	0.11	0.10	0.13	0.09	0.10						
90	0.00	0.00	0.00	0.00	0.00	0.00	0.00	0.00	0.00	0.00	0.00	0.00						
95	0.00	0.00	0.00	0.00	0.00	0.00	0.00	0.00	0.00	0.00	0.00	0.00						
100	0.00	0.00	0.00	0.00	0.00	0.00	0.00	0.00	0.00	0.00	0.00	0.00						
105	0.00	0.00	0.00	0.00	0.00	0.00	0.00	0.00	0.00	0.00	0.00	0.00						
110	0.00	0.00	0.00	0.00	0.00	0.00	0.00	0.00	0.00	0.00	0.00	0.00						
115	0.00	0.00	0.00	0.00	0.00	0.00	0.00	0.00	0.00	0.00	0.00	0.00						
120	0.00	0.00	0.00	0.00	0.00	0.00	0.00	0.00	0.00	0.00	0.00	0.00						
125	0.00	0.00	0.00	0.00	0.00	0.00	0.00	0.00	0.00	0.00	0.00	0.00						
130	0.00	0.00	0.00	0.00	0.00	0.00	0.00	0.00	0.00	0.00	0.00	0.00						
135	0.00	0.00	0.00	0.00	0.00	0.00	0.00	0.00	0.00	0.00	0.00	0.00						
140	0.00	0.00	0.00	0.00	0.00	0.00	0.00	0.00	0.00	0.00	0.00	0.00						
145	0.00	0.00	0.00	0.00	0.00	0.00	0.00	0.00	0.00	0.00	0.00	0.00						
150	0.00	0.00	0.00	0.00	0.00	0.00	0.00	0.00	0.00	0.00	0.00	0.00						
155	0.00	0.00	0.00	0.00	0.00	0.00	0.00	0.00	0.00	0.00	0.00	0.00						
160	0.00	0.00	0.00	0.00	0.00	0.00	0.00	0.00	0.00	0.00	0.00	0.00						
165	0.00	0.00	0.00	0.00	0.00	0.00	0.00	0.00	0.00	0.00	0.00	0.00						
170	0.00	0.00	0.00	0.00	0.00	0.00	0.00	0.00	0.00	0.00	0.00	0.00						
175	0.00	0.00	0.00	0.00	0.00	0.00	0.00	0.00	0.00	0.00	0.00	0.00						
180	0.00	0.00	0.00	0.00	0.00	0.00	0.00	0.00	0.00	0.00	0.00	0.00						

C Range: 0 - 360DEG  
C Interval: 30.0DEG  
Test Speed: HIGH  
Temperature:25.3℃  
Operators:zoe  
Test Date:2024-3-28

Range: 0 - 180DEG  
Interval: 1.0DEG  
Test System:EVERFINE GO-SPEX500\_V1 SYSTEM V2.00.461  
Humidity:65.0%  
Test Distance:3.160m [K=1.0000]  
Remarks: LAMP:BXRE-30G2000-C-83 Ra:90  
LENS:PM-0139B 36R  
DRIVER:TDI044NA0900EF 900mA  
30minutes warm-up